



Prepared by:

Perren Lo

Government Public Cloud Services

Hutchison Global Communications Limited

Date: 27/29 June, 12



A member of the HTHKH Group
A Hutchison Whampoa Company

Agenda

- About HGC
- RFI Review
- HGC Cloud Services
- Backup and Restore Services
- Add-on Services – HGC Metro Networking Services
- Q & A

About HGC - Hutchison Whampoa

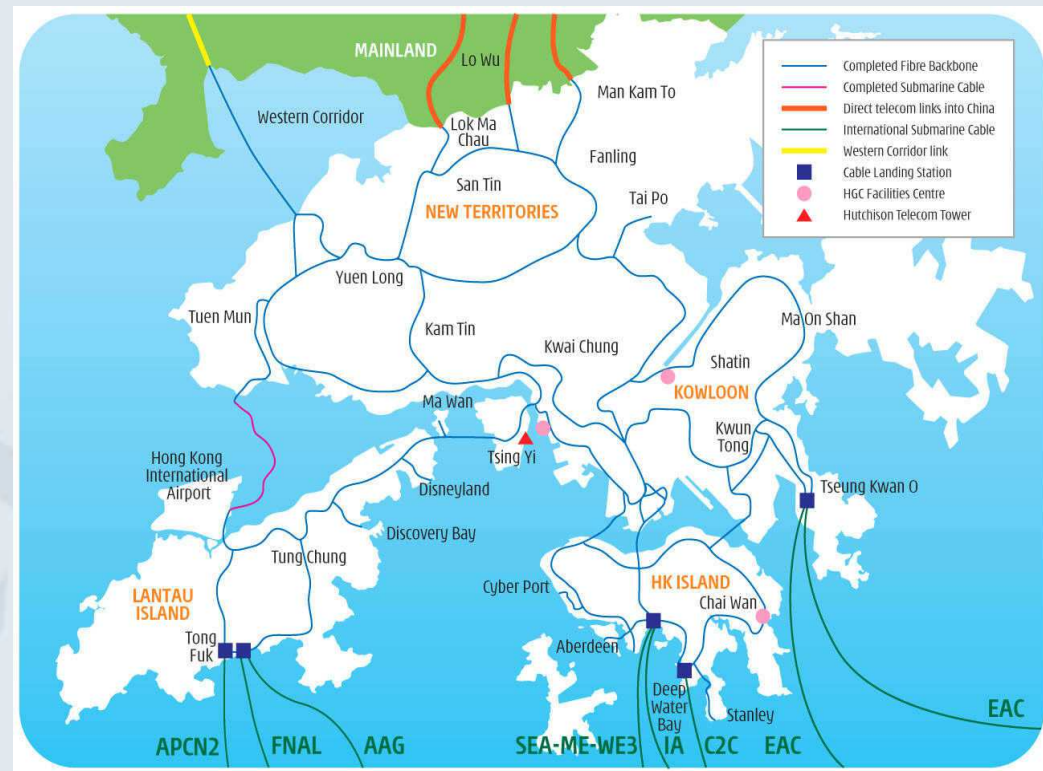
- 5 core businesses in 53 countries
 - **Telecommunications**
 - Ports & related services
 - Property & hotels
 - Retail
 - Energy, infrastructure, investment and others
- **Multinational** conglomerate with businesses spanning 53 countries and over 220,000 employees worldwide
- HK\$9,880 billion turnover of HTHK in year 2010



About HGC - State-of-the-Art Fibre Network

Advanced and Ahead at all times

- Largest & most extensive 100% optical fibre backbone
- Self-healing network based on ring architecture ensures outstanding reliability
- Robust & proven superior fibre optic technology
- Scalable & unlimited bandwidth for all applications



Over 6,000 km of ductwork & 1,120,000 km of fibre optic cable

RFI Review

HGC – listed service provider in all the 4 categories:

1. Cat. A: Productivity Apps – Office Tools and Suites
2. Cat. B: Business Apps – eMail Services
3. Cat. C: Cloud IT Services – Backup and Restore
4. Cat. D: Social Media Services – Photo and Video hosting and sharing

HGC Cloud Services - Overview

Compute Services

- Public Compute-as-a-Service
- Private Compute-as-a-Service
- Hosted Private Compute-as-a-Service
- Provider Compute-as-a-Service
- Managed Hosting

Advanced Cloud Services

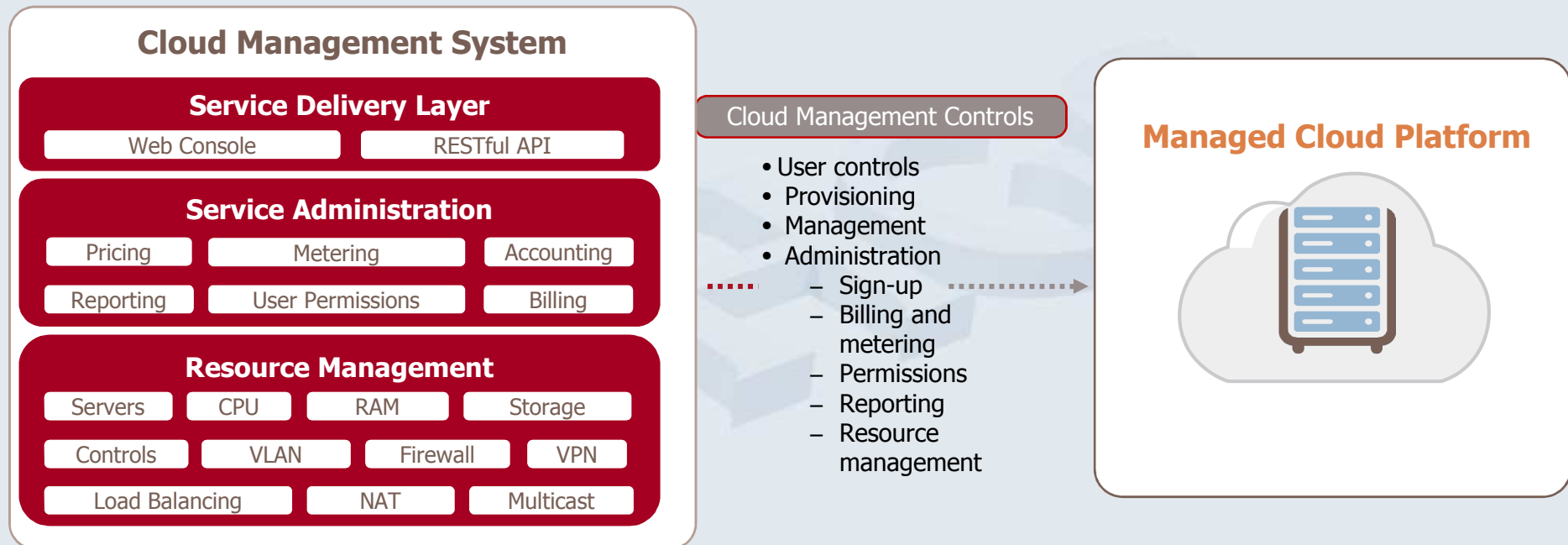
- Security Services
- Backup & Disaster Recovery Services
- Virtual Desktop Services

Application Services

- Complex Web Hosting (SaaS)
- Hosted Microsoft Exchange
- Hosted Microsoft SharePoint
- Hosted Microsoft Lync

HGC Cloud Services - Cloud Management System

Addresses the complexity of cloud orchestration, provisioning and billing

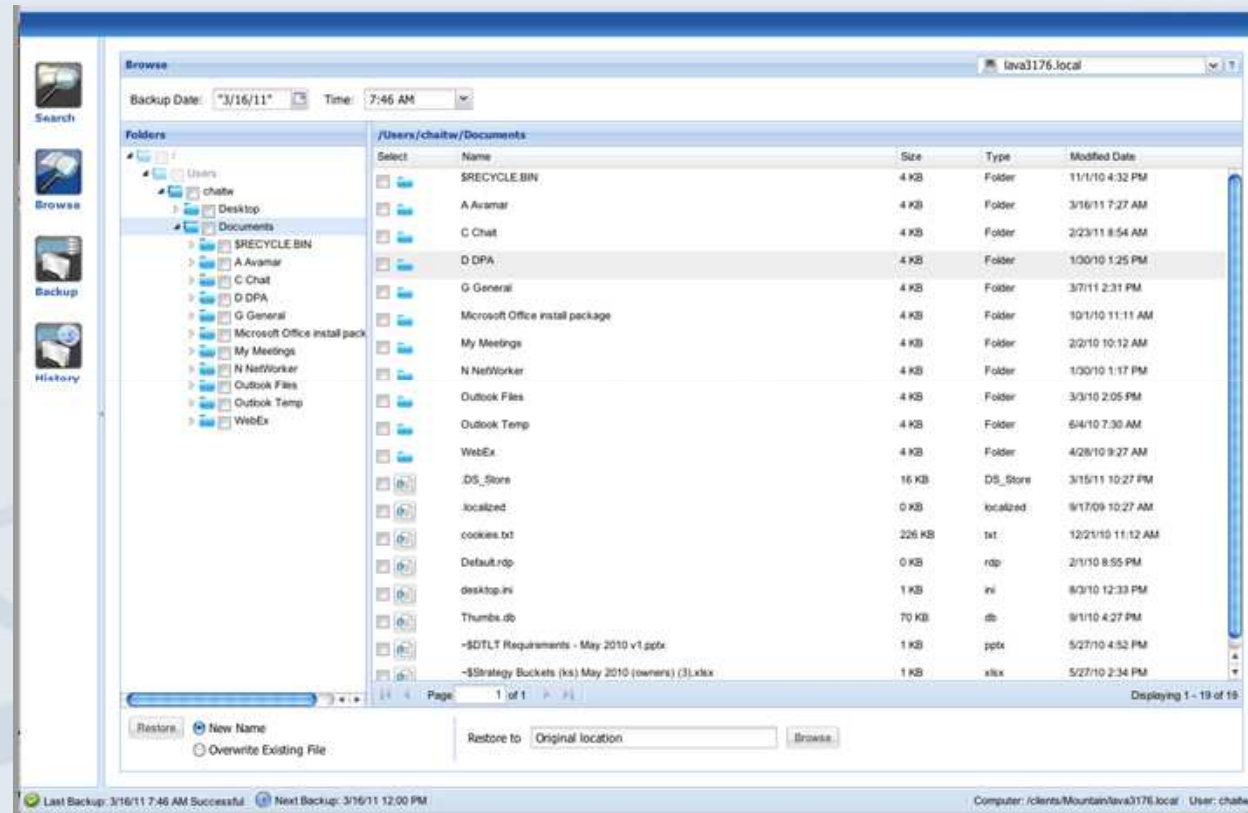


Cloud Management System

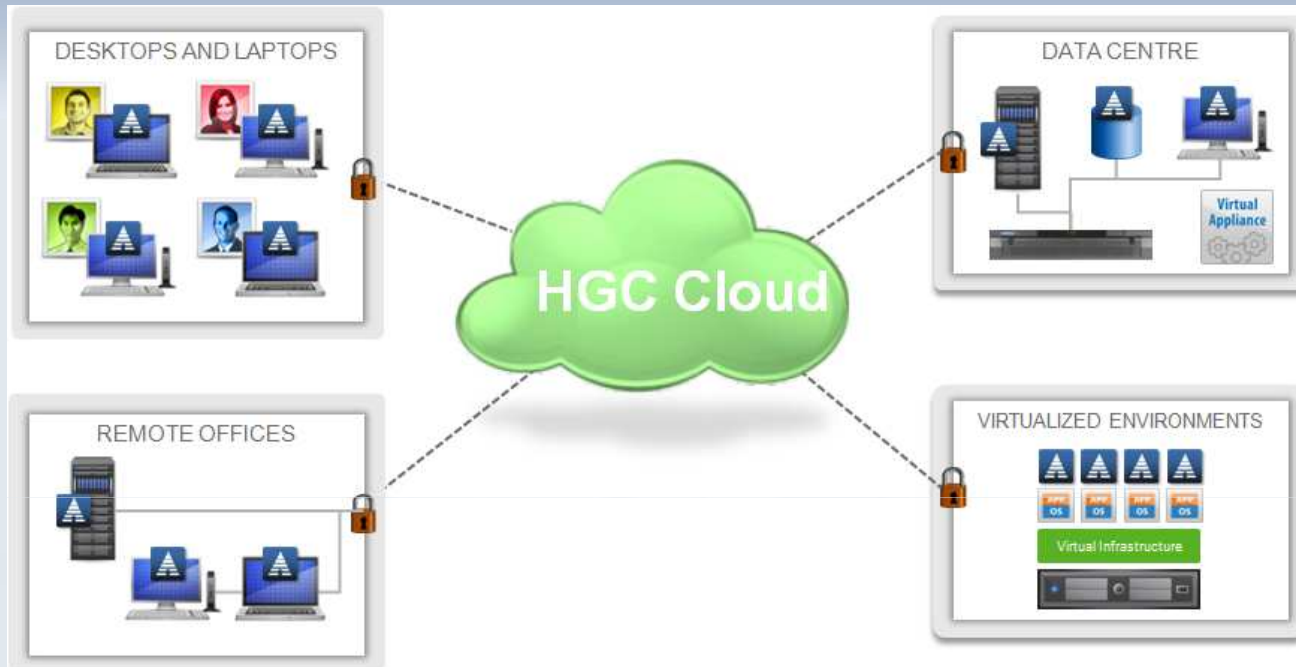
Orchestration Administration Billing Provisioning Management Support Federation

Backup and Restore Service - User Interface

- Web-based
- File search engine
- Self-service



Backup and Restore Service - Deployment



Backup and Restore Service - Typical Scenario

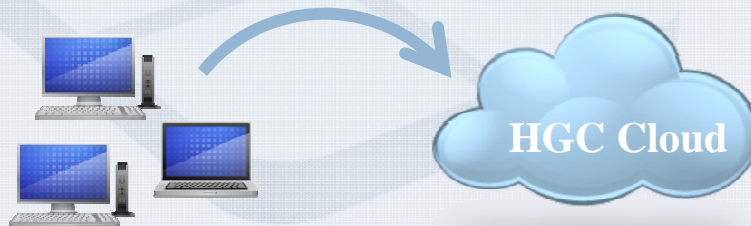
Background

- Financial Services Company
- Have regional offices and branch offices in HK
- Regulatory Requirements on Data Protection



Solution

- Provide **Backup and Restore Service** for customer's data protection
- Support regional offices, branch offices and offsite users' backup for desktops and laptops



Benefits

- Meet regulatory requirements on data protection
- Protect all desktops and laptops in the offices and on the road
- Provide encrypted data protection through internal network or Internet connection
- Full backup everyday facilitates easy and efficient self-recovery by end-users
- Average backup time takes less than 20 minutes per desktop/laptop
- Lower IT department admin/support effort

Backup and Restore Service - Highlight

Functionalities of Backup and Restore Service

Services

- Backup and Restore of data over the Internet
- Provide configurable schedule backup
- Support full backup and increment/differential backup
- Support backup of common databases, mail systems and file systems
- Provide multiple versions of backup

Security

- Support data backup in compressed mode
- Provide encryption of backup data to ensure data security
- Provide integrity checking of backup data integrity
- Provide encryption for stored data
- Support two-factor or multi-factor authentication

Availability

- Provide service availability for month: 99.5%

HGC Metro Networking Services

Add-on Services - MetroNET / Metro Lambda

	MetroNET	Metro Lambda
Network Topology	Private; Point-to-Point, Point-to-Multi-Point, Many-to-Many	Private; Point-to-Point
Technology	Fibre-To-The-Office	Fibre-To-The-Office
Bandwidth	Symmetric, from 1Mbps to 1Gbps (Guarantee bandwidth)	Symmetric, from 1Gbps to 10Gbps (Guarantee bandwidth)
Network	Mesh MetroEthernet Nodes	Mesh DWDM Nodes
Security	High security based on layer 2 MPLS connectivity	High security based on layer 1 optical transmission

Our Clientele – in Public Sector



- Q&A -

- END -